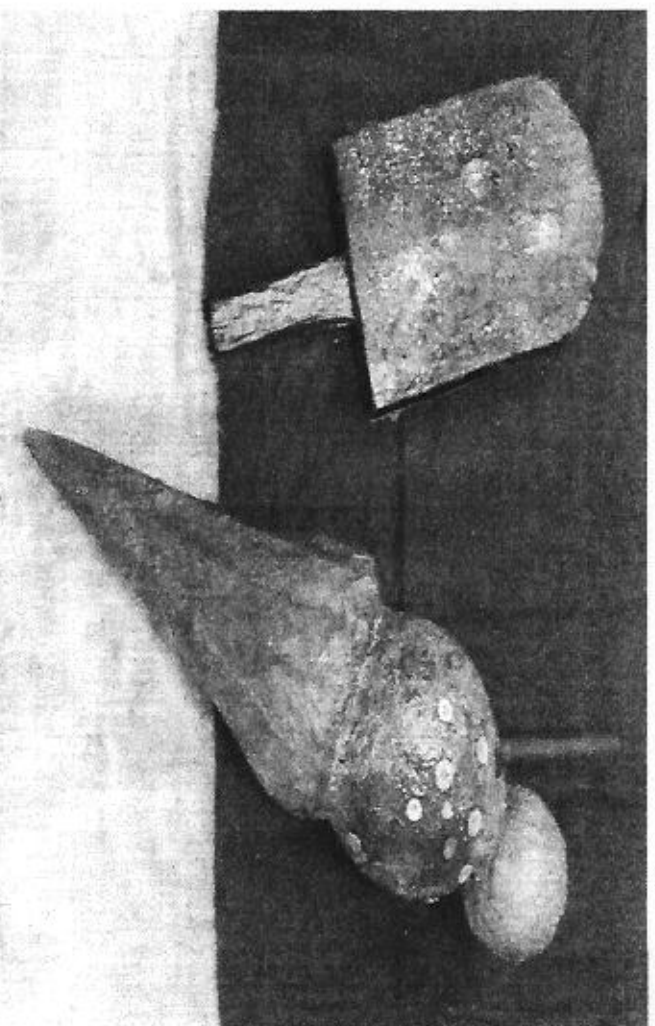


# Meldreth May Fayre



**Saturday 4<sup>th</sup> May 2013**

**1-6pm**

**Art work created by the young people at Orchard**

**Manor**

Welcome everyone to this year's forthcoming May Fayre

which will be held on Saturday 4<sup>th</sup> May 1-6pm on the recreation ground. We hope you will be able to find the time to support this year's event. There will be some fantastic new attractions this year, as you will see in this programme. As always there will be an amazing line up on the stage. This is an event for the young and the young at heart. So bring the whole family along as there will be something for all. As you know the May Fayre started to keep the preschool doors open. Preschool goes from strength to strength and no longer needs any help from this fundraiser, preschool is now somewhere we can all be very proud of. The MVA has grown in size with original members joining forces with the May fayre organisers & those who set up our village street parties. The MVA aim's to support as many aspects of the village as possible. Last year, due to the freezing weather, we were lucky enough to just break even. A huge thank you must go to those of you who made the effort to attend. This year with thanks to you and the sun shine we will be able to support many more clubs and groups in our wonderful village. The May Fayre proves what a wonderful community Meldreth is by support it is shown. So we look forward to seeing you all on May 4<sup>th</sup>

## May Fayre Competitions

Bring along your Victoria sponge to the tea tent by 1.30pm & enter our free competition to see if you are the best Victoria sponge baker in Meldreth (8" jam, no cream). All cakes will be sold after competition in aid of village fayre

Children are invited to enter the miniature garden competition, also a free competition. Under 13's are able to enter. There is no theme to this competition the prize will go to the most creative garden a child makes!!!!

Space Hopper races. Race against the kids & or your spouse for fun. If you're really good ask one of the team to enter our free timed competition.

Finally the much loved scarecrow competition. This is one for all the family to work on together. It is £1 to enter but remember the competition is tough so really use your imagination if you want to win.

Some fantastic prizes to be won.

### What's new this Year

- Tea & cake tent. Vintage styled tea tent. Playing old time music with a microphone for a sing a long, should granny choose too!
- New games including giant jenga, giant connect 4, toddler golf or why not have a bash at croquet. All these extras will be dotted in convenient places around the Fayre& are all available for FREE!!!
- Pony rides. (Professionally supervised)
- Ice cream van. From cones to lollies, this year the May Fayre will have it all
- As well as lager & the much appreciated (Suffolk brewed) Victoria bitter on offer at the beer tent. Cam valley have done us a great deal to allow us to sell their wonderful products at this year's May Fayre
- Inflatable assault course & demolition ball. These are inflatable attractions for older kids & big ones!!!!

**MICHAEL HALLEWELL  
PAINTER & DECORATOR**



City & Guilds Certified.  
Interior & Exterior Painting.

Wallpapering.  
Cleaning & Repair / Replacement of  
Guttering.

A Reliable & Quality Service.  
Over 20 Years Experience.  
References Available.

Fully Insured.  
Free Estimates & Advice.

Tel 01763 260509  
Mob 07957 252 381

michael.hallewell@btinternet.com

**A10 Timber Company**

*For timber sheet material, graded  
timber, mouldings, flooring,  
decking & fencing*

*Insulation*

*Cutting & delivery service*

*All enquiries welcome*

[www.a10timber.co.uk](http://www.a10timber.co.uk)

Barwick Ford, Ware, Herts

Tel: 01279 842016

0808 155 3631

[sales@a10timber.co.uk](mailto:sales@a10timber.co.uk)

**MELDRETH  
LANDSCAPES**

**Design & Layout Plans**

**Hard Landscaping & Lighting**

**Planting & Water Features**

**Pergolas, Decking, etc**

**Tel: 01763 261463**

[www.meldrethlandscapes.co.uk](http://www.meldrethlandscapes.co.uk)

Kingsworth Rd., Meldreth, Royston, Herts



**As the only British**

**manufacturer**

**Of fibre cement**

**profiled sheeting,**

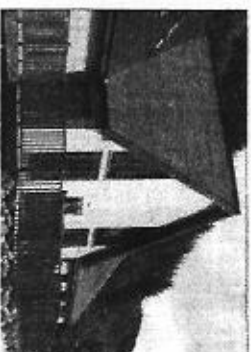
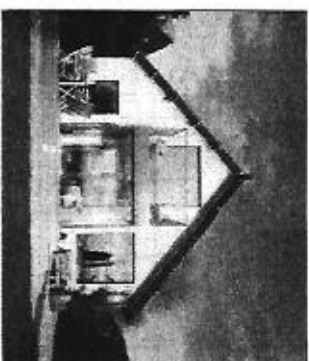
**we are delighted to**

**support our local**

**community at the**

**Meldreth May Fayre**

[www.marleyeternit.co.uk](http://www.marleyeternit.co.uk)





## On The Stage

- 1pm – 2pm: The Jazz band  
2pm – 2.15: Preschool disco ducks  
2.15: Cake judging (in the vintage afternoon tea tent)  
2.20: Tabayah dancers  
3pm – 3.45: Sarah Louise  
4pm – 5pm: Honey Love  
5pm – 5.15: Balloon release & Raffle draw  
5.15 – 6pm: Melody sings



Saturday 4<sup>th</sup> May 2013 1-6pm

£1 ADULT ENTRY inc lucky £ hamper entry!

This years' Fayre promises to be another spectacular village occasion, bringing the community together whilst raising money for local organisations.

### Confirmed attractions for the day include:

- ★ Pony rides ★
- ★ Giant jenga & connect 4 ★
- Jazz band and local singers & Dance displays
- ★ Vintage tea tent with cakes
- ★ Bar-b-q & Bar Scarecrow competition ★
- ★ Victoria sponge cake competition ★
- ★ Mini garden competitions & Inflatables
- ★ Wellywanging & Toddlers tent
- Rides and local craft stalls & Croquet
- ★ Giant space hopper racing & Raffle ★
- ★ Shepreth Wildlife Park
- Fantastic craft stalls

★ **May Queen procession & fancy dress followers** ★  
*Come along and spend the afternoon with family and friends in a relaxed & entertaining atmosphere!*

We look forward to seeing you there! (6)

Melbourn Flooring &

Interiors Ltd

01763 262413

Vast range of carpets, real wood  
& much more

Free estimates-experienced staff  
Designer fabrics-curtain making  
service

New tile showroom

At 26 Royston Rd,

Foxton

[www.melbournflooring.co.uk](http://www.melbournflooring.co.uk)

*The letting centre*

Contact us for a landlord pack

Visit us for free no-obligation  
valuation

24b Orchard Rd

Melbourn

01763 263039

Email: [enquiries@letting-](mailto:enquiries@letting-centre.co.uk)

[centre.co.uk](http://centre.co.uk)

# CARCAR MOTS

01763 263248

GILHOOLY COMMERCIALS

Village Vets. Special vets for special pets



[villagevet.co.uk](http://villagevet.co.uk)

01763 261457

"At village vet it's all about giving pets the care  
they need"

Alexa Selwyn, Head Vet, Meldreth

7

ROYSTON FENCING

Tel: 01763 261150

Fencing, Gates inc electric( made to order.)

Sheds & garden furniture, decking, patios & pergolas

Sleepers, paving & natural stone

[www.roystonfencing.co.uk](http://www.roystonfencing.co.uk)

MELDRETH PLANT HIRE

Diggers, dumpers, breakers, whackers & rotavators

Available for daily or weekly hire

[www.meldrethplant.co.uk](http://www.meldrethplant.co.uk)

8



**Meldreth Pre-School**  
Registered No: 014585  
It's no secret

We are a friendly pre-school offering a high quality term time service. We take children from the age of two and are happy to welcome children in nappies.

We run sessions from 9.00am to 11.30am. Lunch Club from 11.30am to 12.30pm and afternoon sessions from 12.30pm to 3.00pm.

We offer a range of activities as well as play and creative learning including music, Disco Ducks and gardening.

The pre-school has very close links with the village Primary School.

We are OFSTED registered.

Our contact details are:

Village Hall  
High Street  
Meldreth  
S68 6LB

Tel: 07952 295655

For more information pop in and see us. Visit [www.meldrethpreschool.com](http://www.meldrethpreschool.com) or follow us on Facebook

#### Hill View Farm Shop

Chestnut Lane, Kneesworth, Tel: 01763 244226



❖ For all your local farm produce including:

- ❖ Fresh fruit and vegetables
- ❖ Frozen foods
- ❖ Fresh cut flowers and plants
- ❖ Garden furniture
- ❖ Pet foods and sundries
- ❖ Hay, straw and bedding
- ❖ A warm, friendly welcome awaits you!



## What else to expect at this year's event

Shepreth Wildlife Park attend with animals every year & this year we're lucky enough to have their support again. They always bring some wonderful creatures the children can pet so look out for their tent.

Bouncy castles, slides and many other fairground rides

WellyWanging with prizes for the furthest throws in different categories  
Toddler Tent: for a very small fee your very small ones can have loads of fun & all the proceeds go towards the mother and toddler group held in the village hall

Beer tent serving real ale, lager, local cider & soft drinks

Vintage Afternoon tea tent selling hot & cold beverages to enjoy with a slice of a delicious homemade creation

Many beautiful crafts on stalls from stained glass jewellery to homemade pickles & wood turned things to homemade biscuits

Let's not forget the barbeque. After trying a few different types of meats this year the May Fayre goes back to the lamb kebabs that caused a queue half way up the field, cooked on a spit for that extra special flavour. Also available will be burgers and sausages for all ages & jacket potatoes with cheese for the vegi's in the village

Raffle tickets will be available from the MVA team on the day  
Entrance is £1 for adults & children are free. Your pound will be entered into a lucky pound draw with the winner receiving a beautiful hamper  
Crowning of The May Queen & Parade, bring along your little ones in fancy dress to follow the May Queen cart

The MVA would like to thank the following people for their continued support:

The British Queen

Suffolk brewed Victoria bitter

All the local business' that support through advertising space

All the musicians & bands

The Tabbaya dance group

Meldreth preschool disco ducks

All the companies who donate raffle prizes

Chris Elbourn for his sound engineering

Set up scenery

Nigel for moving the football game

Everyone who volunteers their time year in year out

& the wonderful people of Meldreth who make this event worthwhile

